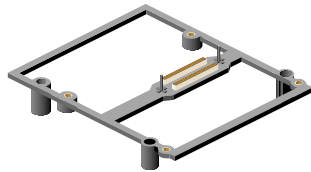

Silicon Graphics® O2™ R12000A Upgrade Notice



Caution: In order to avoid damage to your O2 CPU module, it is important that you replace the enclosed CPU support bracket before you install the CPU module.



Please see the document, *Silicon Graphics O2 and Silicon Graphics Octane R12000 Upgrade Information*, included with this shipment, for details on how to replace the CPU support and install the CPU module.

©2000, Silicon Graphics, Inc. All rights reserved.
Silicon Graphics is a registered trademark and SGI and O2 are trademarks of Silicon Graphics, Inc.

