

# IRISconsole™ to SGIconsole™ Migration Guide

007-4367-001

---

**COPYRIGHT**

© 2001 Silicon Graphics, Inc. All rights reserved; provided portions may be copyright in third parties, as indicated elsewhere herein. No permission is granted to copy, distribute, or create derivative works from the contents of this electronic documentation in any manner, in whole or in part, without the prior written permission of Silicon Graphics, Inc.

---

**LIMITED RIGHTS LEGEND**

The electronic (software) version of this document was developed at private expense; if acquired under an agreement with the USA government or any contractor thereto, it is acquired as "commercial computer software" subject to the provisions of its applicable license agreement, as specified in (a) 48 CFR 12.212 of the FAR; or, if acquired for Department of Defense units, (b) 48 CFR 227-7202 of the DoD FAR Supplement; or sections succeeding thereto. Contractor/manufacture is Silicon Graphics, Inc., 1600 Amphitheatre Pkwy 2E, Mountain View, CA 94043-1351.

---

**TRADEMARKS AND ATTRIBUTIONS**

Silicon Graphics is a registered trademark and IRIS, IRISconsole, IRIS InSight, IRIX, Onyx, Origin, SGI, SGIconsole and the SGI logo are trademarks of Silicon Graphics, Inc.

EtherLite is a trademark of Digi International, Inc. Linux is a trademark of Linus Torvalds. PostScript is a registered trademark of Adobe Systems, Inc. UNIX is a registered trademark of The Open Group in the United States and other countries. The X device is a trademark of the Open Group. Windows is a trademark of Microsoft Corporation.

Cover design by Sarah Bolles, Sarah Bolles Design, and Dany Galgani, SGI Technical Publications.

---

## Record of Revision

| <b>Version</b> | <b>Description</b>  |
|----------------|---|
| 001            | November 2001<br>Original publication. Supports the SGIconsole 1.0 release. |



---

# Contents

|  |           |
|--|-----------|
| <b>About This Guide</b> . . . . .                            | <b>xi</b> |
| Related Publications . . . . .                               | xi        |
| Obtaining Publications . . . . .                             | xii       |
| Conventions . . . . .  | xii       |
| Reader Comments . . . . .                                    | xiii      |
| <br>   |           |
| <b>1. Comparison of IRISconsole and SGIconsole</b> . . . . . | <b>1</b>  |
| Overviews of IRISconsole and SGIconsole . . . . .            | 1         |
| IRISconsole . . . . .  | 1         |
| SGIconsole . . . . .   | 2         |
| Graphical User Interface Comparison . . . . .                | 5         |
| IRISconsole GUI . . . . .                                    | 5         |
| IRISconsole Main Window Operations . . . . .                 | 6         |
| IRISconsole Site Window Operations . . . . .                 | 7         |
| SGIconsole Console Manager GUI . . . . .                     | 8         |
| Console Manager Tasks and Categories . . . . .               | 10        |
| Advantages of Using the Console Manager GUI . . . . .        | 13        |
| Functional Comparison . . . . .                              | 14        |
| Security Comparison . . . . .                                | 16        |
| Configuration Files . . . . .                                | 18        |
| IRISconsole Configuration . . . . .                          | 18        |
| SGIconsole Configuration . . . . .                           | 20        |
| Helpful Information on SGIconsole . . . . .                  | 22        |
| <br>   |           |
| <b>Index</b> . . . . .                                       | <b>23</b> |
| <b>007-4367-001</b>  | <b>v</b>  |



---

## Figures

|                    |  |    |
|--------------------|--|----|
| <b>Figure 1-1</b>  | SGIconsole Web Interface . . . . .                         | 3  |
| <b>Figure 1-2</b>  | IRISconsole Graphical User Interface Main Window . . . . . | 6  |
| <b>Figure 1-3</b>  | IRISconsole Site with Four Systems . . . . .               | 7  |
| <b>Figure 1-4</b>  | Console Manager Graphical User Interface . . . . .         | 9  |
| <b>Figure 1-5</b>  | Console Manager View . . . . .                             | 10 |
| <b>Figure 1-6</b>  | Node Tasks Pulldown Menu . . . . .                         | 11 |
| <b>Figure 1-7</b>  | File Pulldown Menu . . . . .                               | 12 |
| <b>Figure 1-8</b>  | Find User and Node Object Button . . . . .                 | 13 |
| <b>Figure 1-9</b>  | IRISconsole Security Window . . . . .                      | 16 |
| <b>Figure 1-10</b> | Console Manager Security Window . . . . .                  | 17 |
| <b>Figure 1-11</b> | IRISconsole Change Site Config Dialog Box . . . . .        | 18 |
| <b>Figure 1-12</b> | Change IRISconsole Config Dialog Box . . . . .             | 19 |
| <b>Figure 1-13</b> | Console Manager Node Tasks Menu . . . . .                  | 20 |
| <b>Figure 1-14</b> | Add a Node Dialog Box . . . . .                            | 21 |





---

## Tables

|                  |                             |    |
|------------------|-----------------------------|----|
| <b>Table 1-1</b> | SGIconsole Tools . . . . .  | 4  |
| <b>Table 1-2</b> | Console Functions . . . . . | 15 |



---

## About This Guide

This guide documents SGIconsole release 1.0 running on an SGI 1100 Linux system.

It documents the SGIconsole web interface for an SGI workstation that allows it to control multiple SGI servers, SGI partitioned systems, large single-system image servers, and clusters of systems. It compares the new SGIconsole software to the existing IRISconsole software.

This manual contains the following sections:

- "Overviews of IRISconsole and SGIconsole", page 1
- "Graphical User Interface Comparison", page 5
- "Functional Comparison", page 14
- "Security Comparison", page 16
- "Configuration Files", page 18
- "Helpful Information on SGIconsole", page 22

## Related Publications

The following documents contain additional information that may be helpful:

- *SGIconsole 1.0 Start Here*  
Contains information about installing, configuring, and starting to use SGIconsole software.
- *SGIconsole Software CD Information Card*  
Your SGIconsole comes with a base Linux distribution and the SGIconsole software installed. This guide describes how to install the software from the CD if at some time you need to reinstall it.
- *Console Manager for SGIconsole Administrator's Guide*  
This guide documents the Console Manager graphical user interface for SGIconsole that allows it to control multiple SGI servers, SGI partitioned systems, large single-system image servers, and clusters of systems.

- *SGIconsole Hardware Connectivity Guide*

This guide describes how to install the SGIconsole onto the SGI Origin 200, SGI Origin 2000, and SGI Origin 300, and SGI Origin 3000 products.

- *EL Serial Port Server Installation Guide*

This guide describes how to set up and power up the EL serial port server (also know as EtherLite, EL-16, or Silicon Graphics Ethernet serial port server.

- *SGI Origin 3000 Series Owner's Guide*

This guide provides an overview, and describes how to set up and operate the SGI Origin 3000 series of servers.

- *SGI Origin 300 User's Guide*

This guide provides an overview, and describes how to set up and operate the SGI Origin 300 server.

- *Performance Co-Pilot ReadMe First*

- *Performance Co-Pilot IRIX Base Software Administrator's Guide*

- *Performance Co-Pilot Programmer's Guide*

- *Performance Co-Pilot User's and Administrator's Guide*

## Obtaining Publications

To obtain SGI documentation, go to the SGI Technical Publications Library at:

<http://techpubs.sgi.com>.

## Conventions

The following conventions are used throughout this document:

| <b>Convention</b>    | <b>Meaning</b>   |
|----------------------|--|
| <code>command</code> | This fixed-space font denotes literal items such as commands, files, routines, path names, signals, messages, and programming language structures. |

|                 |   |
|-----------------|---|
| <i>variable</i> | Italic typeface denotes variable entries and words or concepts being defined.   |
| [ ]             | Brackets enclose optional portions of a command or directive line.  |
| ...             | Ellipses indicate that a preceding element can be repeated.   |
| <b>GUI</b>      | This font denotes the names of graphical user interface (GUI) elements such as windows, screens, dialog boxes, menus, toolbars, icons, buttons, boxes, fields, and lists. |

## Reader Comments

If you have comments about the technical accuracy, content, or organization of this document, please tell us. Be sure to include the title and document number of the manual with your comments. (Online, the document number is located in the front matter of the manual. In printed manuals, the document number is located at the bottom of each page.)

You can contact us in any of the following ways:

- Send e-mail to the following address:

`techpubs@sgi.com`

- Use the Feedback option on the Technical Publications Library World Wide Web page:

`http://techpubs.sgi.com`

- Contact your customer service representative and ask that an incident be filed in the SGI incident tracking system.

- Send mail to the following address:

Technical Publications  
SGI  
1600 Amphitheatre Pkwy., M/S 535  
Mountain View, California 94043-1351

- Send a fax to the attention of “Technical Publications” at +1 650 932 0801.

We value your comments and will respond to them promptly.



## Comparison of IRISconsole and SGIconsole

This publication provides information about the similarities and differences between IRISconsole and the SGIconsole Console Manager graphical user interface. It is written for system administrators who are responsible for the configuration and operation of multiple SGI servers, SGI partitioned systems, and large single-system servers.

This chapter contains the following sections:

- "Overviews of IRISconsole and SGIconsole", page 1
- "Graphical User Interface Comparison", page 5
- "Functional Comparison", page 14
- "Security Comparison", page 16
- "Configuration Files", page 18
- "Helpful Information on SGIconsole", page 22

### Overviews of IRISconsole and SGIconsole

This section provides a brief overview of IRISconsole and SGIconsole.

#### IRISconsole

The IRISconsole software for an Silicon Graphics Octane, Silicon Graphics O2, or Indy workstation allows it to control Origin 200, Origin 2000, Challenge, Silicon Graphics Onyx2, and Silicon Graphics Onyx systems. IRISconsole does not support the SGI Origin 300 or SGI Origin 3000 series of servers, or the Silicon Graphics Onyx 3000 graphic systems. The IRISconsole software is included in the base IRISconsole option, which includes any one of the following IRISconsole multiplexers: ST-1600, ST-1616, ST-1620, ST-1032, EL-8, EL-16, or EL-32. Serial cables, which are specific to the type of system controlled, are provided by additional IRISconsole options and complete the IRISconsole package.

The IRISconsole graphical user interface (GUI) enables you to set up and administer *sites*. A site is a group of workstations, servers, clusters, or other systems that are

administered through IRISconsole. A site consists of a number of *systems* monitored and controlled by IRISconsole.

The Octane, O2, or Indy workstation communicates with the servers through the multiplexer, to which each Origin, Challenge, or Onyx system is connected via a pair of serial cables. Each multiplexer has ports for eight or more Origin, Challenge, and Onyx systems; additional sets of serial cables are available from SGI. Optionally, an additional multiplexer can be connected to the workstation to monitor additional servers.

The IRISconsole software affects only systems that are physically attached to the multiplexer connected to the Octane, O2, or Indy workstation on which the IRISconsole software is running. The IRISconsole software cannot communicate with another system running IRISconsole to share access to attached systems. IRISconsole is a single, self-contained software module. IRISconsole is proprietary software.

For detailed information on IRISconsole, see the *IRISconsole Administrator's Guide*.

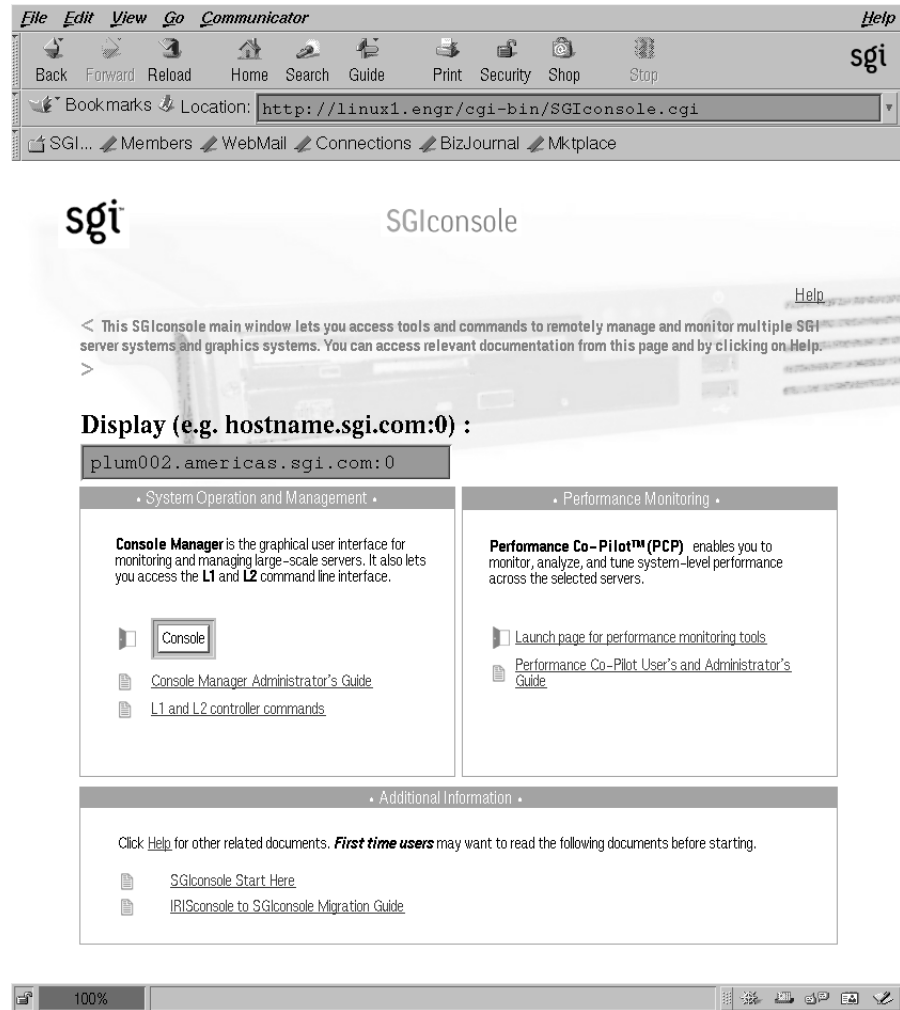
## **SGIconsole**

SGIconsole lets you manage multiple SGI servers, SGI partitioned systems, and large single-system image servers. It consists of an SGI 1100 platform, a serial multiplexer or Ethernet hub, and a software suite that provide access to common remote management tools.

The SGIconsole software allows you to control and monitor the SGI Origin 200, SGI Origin 2000, SGI Origin 300, and SGI Origin 3000 series of servers and the Silicon Graphics Onyx2 and SGI Onyx 3000 graphic systems. SGIconsole does not support Indy, O2, Octane, Challenge, or Silicon Graphics Onyx systems.

SGIconsole 1.0 software includes the following software packages: Console Manager, and Performance Co-Pilot (PCP), and L1 and L2 system controller commands. SGIconsole provides a web interface which allows access to this suite of tools as shown in Figure 1-1, page 3.





**Figure 1-1** SGIconsole Web Interface

IRISconsole and SGIconsole provide similar features. While IRISconsole is a single tool, SGIconsole is a collection of tools to provide a remote management solution, including hardware monitoring and system-level performance management as shown in Table 1-1, page 4.

**Table 1-1** SGIconsole Tools

| Tool                          | Description   |
|-------------------------------|---|
| Console Manager               | A graphical user interface for SGIconsole   |
| Performance Co-Pilot (PCP)    | Monitors and manages system-level performance   |
| L1 and L2 controller commands | Enables a site to use SGI Origin 3000 server L1 and L2 controller commands to manage and monitor a server |

On SGI Origin 300 and SGI Origin 3000 systems, the L1 controllers monitor the activities of their brick.

The L2 controllers displays the status and error messages generated by the L1 controllers and generates and displays the status and error messages for the power bay and rack chassis. You can enter L1 and L2 commands to control activity in your server system from a console invoked through Console Manager. For information on the L1 and L2 commands, see the *SGI Origin 300 User's Guide* and the *SGI Origin 3000 Series Owner's Guide*, respectively.

Performance Co-Pilot (PCP) provides a range of services that may be used to monitor and manage system performance. These services are distributed and scalable to accommodate the most complex system configurations and performance problems.

PCP is targeted at the performance analyst, benchmarker, capacity planner, developer, database administrator, or system administrator with an interest in overall system performance and a need to quickly isolate and understand performance behavior, resource utilization, activity levels, and bottlenecks in complex systems. Platforms that can benefit from this level of performance analysis include large servers, server clusters, or multiserver sites delivering database management systems (DBMS), compute, Web, file, or video services.

The services offered by PCP are especially attractive for administrators tackling harder system-level performance problems. For example, this may involve a transient performance degradation, or correlating end-user quality of service with platform activity, or diagnosing some complex interaction between resource demands on a single system, or management of performance on large systems.

The distributed PCP architecture makes it especially useful for centralized monitoring of distributed processing (that is, in a cluster or webserver farm environment), especially where a large number nodes (hosts) are involved.

For more information on PCP, see the *Performance Co-Pilot User's and Administrator's Guide*.

For procedures for using the SGIconsole user interface to access SGIconsole software, see the *SGIconsole 1.0 Start Here*.

Console Manager is a graphical user interface for the SGIconsole scalable management and monitoring tools used to control a single node or multiple nodes. A *node* can be a server, a partitioned system, or a large single-system image server. The Console Manager GUI consolidates information about multiple nodes in a very compact space. Console Manager can run on SGI Linux platforms.

IRISconsole "system" is equivalent to an SGIconsole node.

The following table lists the hardware platforms supported by IRISconsole and SGIconsole.

**IRISconsole**

Indy, O2, Octane, SGI Origin200 and SGI Origin2000 series of servers, Silicon Graphics Onyx2, and Silicon Graphics Onyx systems

**SGIconsole**

SGI Origin200, SGI Origin 2000, SGI Origin 300, SGI Origin 3000 series of servers, Silicon Graphics Onyx2 and Silicon Graphics Onyx 3000 graphics systems

For more information see the *SGIconsole Hardware Connectivity Guide* and the *Console Manager Administrator's Guide for SGI*.

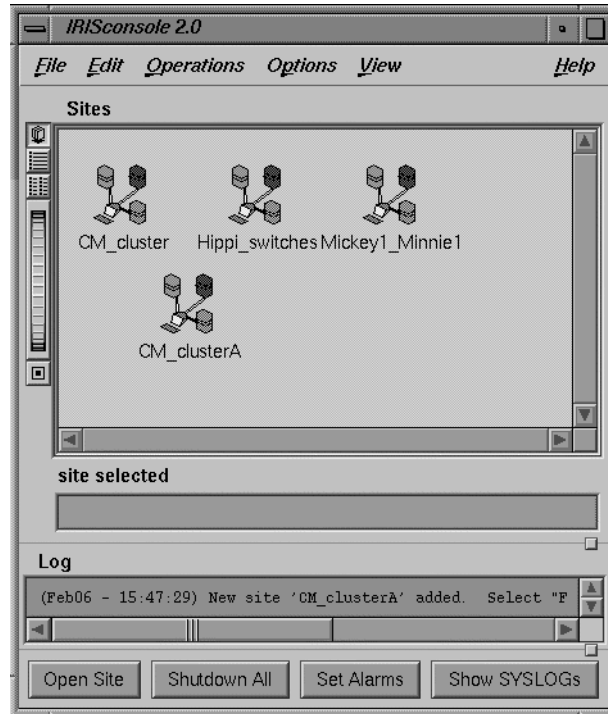
## Graphical User Interface Comparison

This section compares the IRISconsole GUI to the new SGIconsole Console Manager GUI.

### IRISconsole GUI

Figure 1-2, page 6 shows the IRISconsole graphical user interface (GUI). The IRISconsole GUI enables you to set up and administer sites. A site is a group of

workstations, servers, clusters, or other systems that are administered through IRISconsole.



**Figure 1-2** IRISconsole Graphical User Interface Main Window

### IRISconsole Main Window Operations

The IRISconsole GUI main window enables you to set up a site, configure a site, edit a site configuration, add a system to a site, or delete a site configuration.

The bottom of the IRISconsole main window, as shown in Figure 1-2, page 6, has four buttons that allow you to perform the following operations:

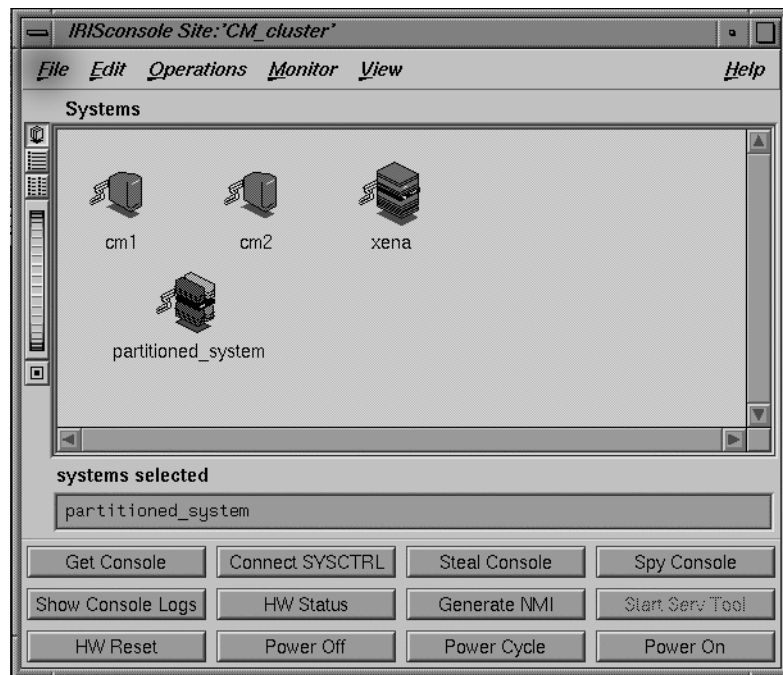
- Open a site
- Shut down all systems in a site
- Set system alarms

- Show the system logs for all systems in a site

To see the characteristics for a site, double-click its name in the scrolling list of sites in the IRISconsole main window. Alternatively, you can select a site and then choose **Open Site** from the IRISconsole main window **Operations** menu.

### IRISconsole Site Window Operations

Figure 1-3, page 7 shows an IRISconsole site with four systems.



**Figure 1-3** IRISconsole Site with Four Systems

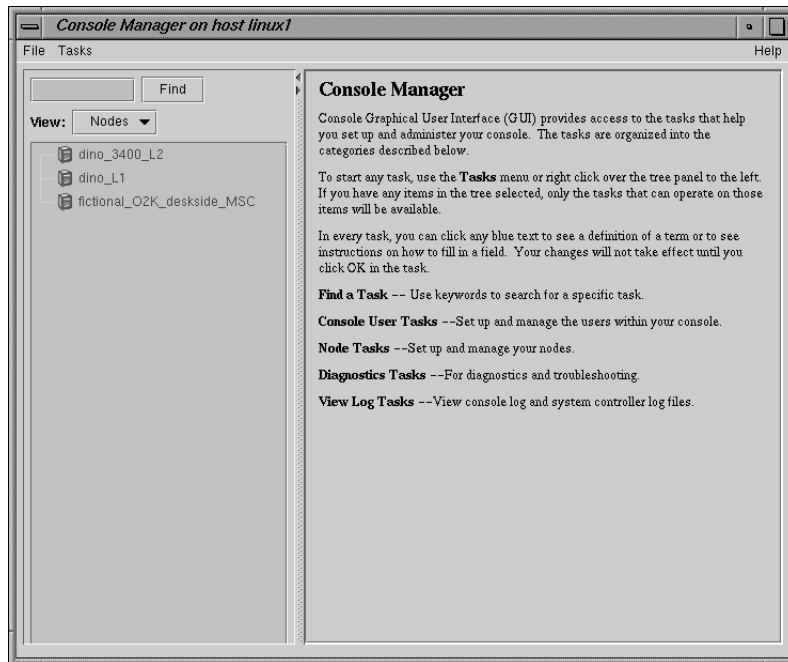
You can use the buttons in the site window for the following system administration tasks:

|                        |                           |
|------------------------|---------------------------|
| <b>Get Console</b>     | Get the system console    |
| <b>Connect SYSCTRL</b> | Connect to system control |

|                          |                                   |
|--------------------------|-----------------------------------|
| <b>Steal Console</b>     | Steal the system console          |
| <b>Spy Console</b>       | Spy the system console            |
| <b>Show Console Logs</b> | Show the console logs             |
| <b>HW Status</b>         | Get hardware status               |
| <b>Generate NMI</b>      | Generate a non-maskable interrupt |
| <b>Start Serv Tool</b>   | Start the service tool            |
| <b>HW Reset</b>          | Reset hardware                    |
| <b>Power Off</b>         | Power off the selected system     |
| <b>Power Cycle</b>       | Power cycle the selected system   |
| <b>Power On</b>          | Power on the selected system      |

#### **SGIconsole Console Manager GUI**

Figure 1-4, page 9 shows the Console Manager GUI.



**Figure 1-4** Console Manager Graphical User Interface

The Console Manager View provides the following capabilities:

- Shows the results when a task has been completed. For example, when the **Add a Node** task is done, you will see the new node show up in the Console Manager View.
- Shows the nodes configured at a site and the Console Manager users.
- Gives access to help information.

From the Console Manager View, you can click on a node to display key information. Figure 1-5, page 10 shows an example of the Console Manager View window.

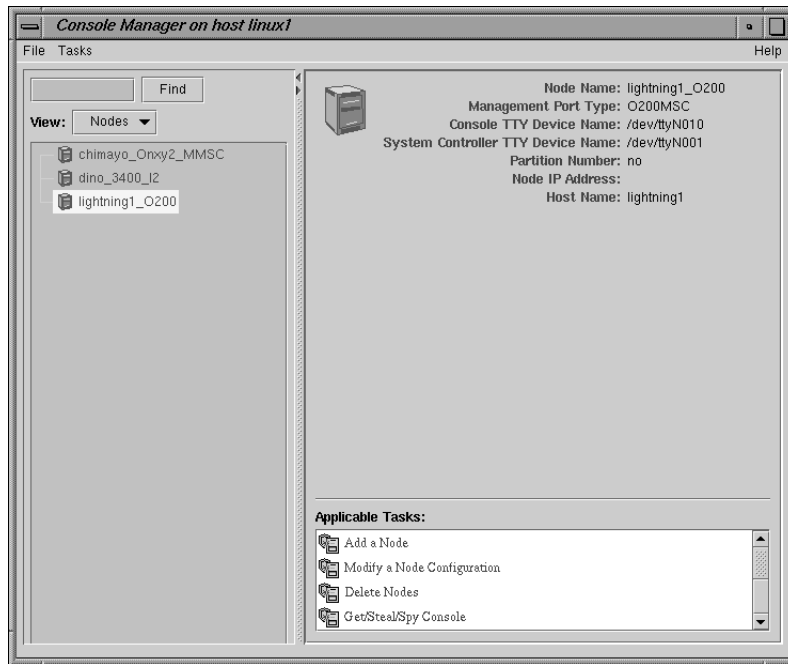


Figure 1-5 Console Manager View

### Console Manager Tasks and Categories

The Console Manager provides access to the *tasks* that help you set up and administer a single node or all the nodes at a site.

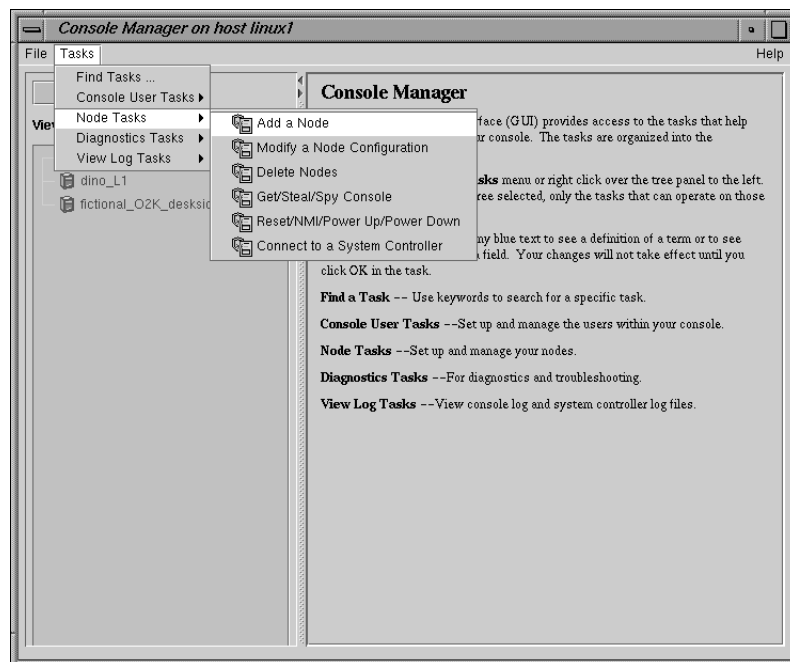
The Console Manager has the following categories:

- **Overview**, which describes the categories available and introduces the tool, how to use it, and some suggestions for first time users.
- **Find Tasks**, which lets you use keywords to search for a specific task.
- **Console User Tasks**, which allow you to:
  - **Add a new Console User**
  - **Change a Console User Password**
  - **Delete a Console User**



For more information on these tasks, see the *Console Manager for SGIconsole Administrator's Guide*.

- **Node Tasks** as shown in Figure 1-6, page 11, allow you to:
  - **Add a Node**
  - **Modify a Node Configuration**
  - **Delete Nodes**
  - **Get/Steal/Spy console**
  - **Reset/NMI/Power Up/Power Down Nodes**
  - **Connect to a System Controller**



**Figure 1-6 Node Tasks Pulldown Menu**

- **Diagnostic Tasks**, which allow you to:

- **Reset Console Backend Software**
- **View Log Tasks**, which allow you to:
  - **View System Log**
  - **View System Controller Logs**
- **File Menu Tasks**, as shown in Figure 1-7, page 12, allow you to:
  - **New Console Manager**
  - **Clone this Console Manager**
  - **Show SALog** (see Figure 1-7, page 12, shows what commands are executed by the GUI; for Console Manager debugging purposes only)
  - **Close**
  - **Exit**

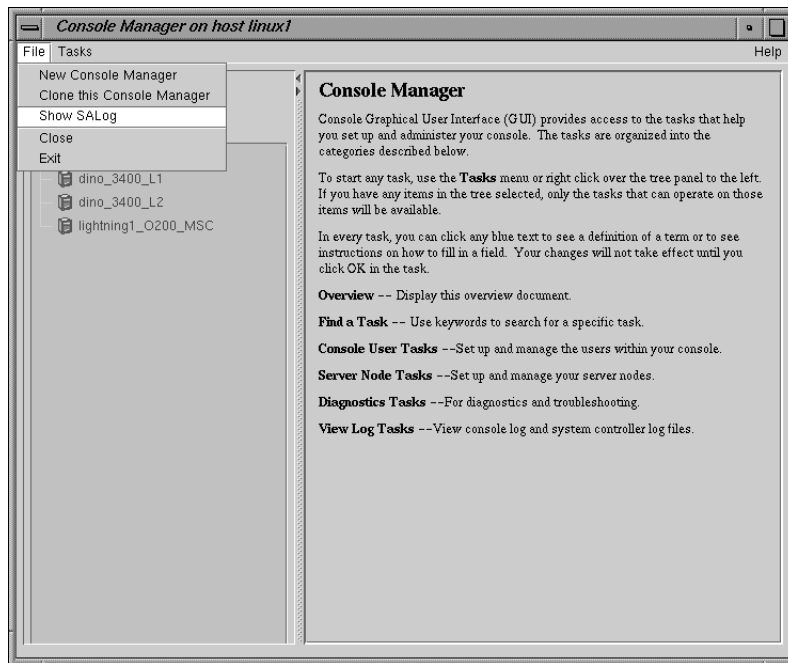
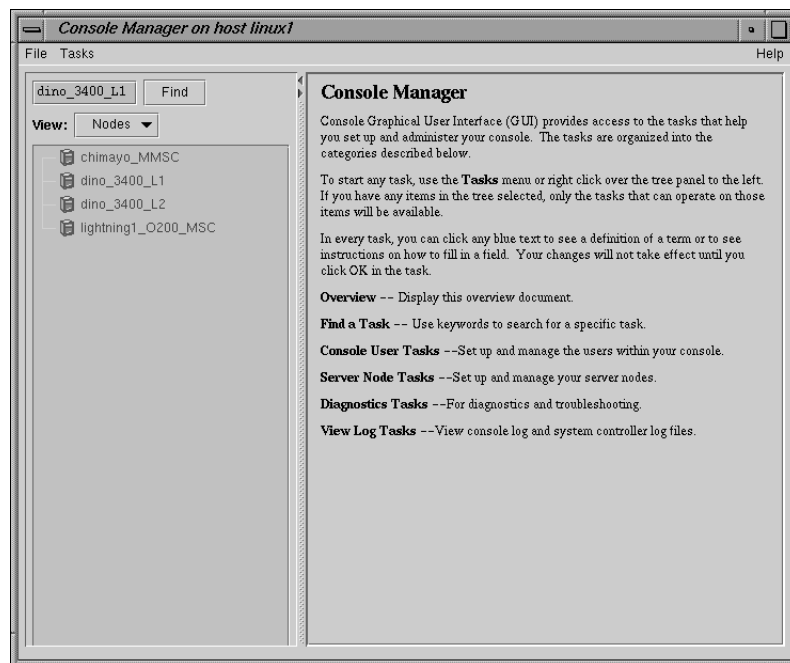


Figure 1-7 File Pulldown Menu

## Advantages of Using the Console Manager GUI

You can use the Console Manager interface to consolidate information about multiple nodes and multiple users in a very compact space. Unlike the IRISconsole GUI, the Console Manager interface contains one window organized into two main panels. The panel on the left contains information about the nodes being managed and monitored and the users logged into Console manager. It also provides a view of all the nodes being controlled and monitored by Console Manager. The panel on the right contains configuration information about each node configured and the applicable tasks (see Figure 1-4, page 9). The right mouse menus allow you to launch tasks faster in the Console Manager GUI. The **Find** button text field helps you to find node and user objects more quickly as shown in Figure 1-8, page 13.



**Figure 1-8** Find User and Node Object Button

Console Manager can be used in a heterogeneous system environment. It can monitor and control systems running either the IRIX or Linux operating systems.

Unlike IRISconsole, Console Manager provides continuous system connection without the console window active. Console Manager also provides numerous connections to any one system.

The client/server architecture of Console Manager/SGIconsole is very robust. The modular nature of the architecture allows new technology to be easily integrated into the software suite, for example, new SGIconsole plugins can be added to support new node types without having to rewrite all of the Console Manager/SGIconsole code.

## Functional Comparison

The following section compares the functional capabilities of the IRISconsole versus SGIconsole.

Table 1-2, page 15 shows a comparison between IRISconsole and SGIconsole for single-system functions.

**Table 1-2** Console Functions

| Console Functions   | IRISconsole                  | SGIconsole   |
|---|------------------------------|--|
| Console Window with logging                                   | Yes                          | No   |
| Power cycle (from GUI)  | Yes                          | No   |
| Power down (from GUI)   | Yes                          | Yes  |
| Power up (from GUI)   | Yes                          | Yes  |
| System reset (from GUI)                                       | Yes                          | Yes  |
| System non-maskable interrupt (NMI)                           | Yes                          | Yes  |
| Hardware inventory  | Yes                          | No   |
| Users logged in display                                       | Yes                          | No   |
| SYSLOG collection monitoring                                  | Yes                          | No, but ESP provides equivalent functionality  |
| Hardware graphs showing temperatures, fan speeds and voltages | Yes (Challenge systems only) | No   |
| Get console   | Yes                          | Yes  |
| Spy console   | Yes                          | Yes  |
| Steal console   | Yes                          | Yes  |
| Show console logs   | Yes                          | No   |
| Get system logs   | Yes                          | Yes  |
| Get system controller logs                                    | Yes                          | Yes  |
| Start service tool (for field personnel)                      | Yes                          | No in Console Manager, but provided by Embedded Service Partner (ESP). See the <code>esp(5)</code> man page. |
| Generate availmon report                                      | Yes                          | No, but ESP provides equivalent functionality  |
| Continuous system connection without console window active    | No                           | Yes  |
| Numerous connections to any one system                        | No                           | Yes  |

| Console Functions  | IRISconsole | SGIconsole  |
|--|-------------|-------------|
| Desktop icon for high-level resource usage monitoring on one or more nodes   | No          | Yes, in PCP |
| Time-series (strip charts) for CPU utilization, disk activity, filesystem fullness, network traffic, NFS activity, paging, system calls and an overview  | No          | Yes, in PCP |
| 3-D performance visualizations for CPU utilization, disk activity, Origin 2000 and Origin 3000 CPU and router activity, overview across a group of nodes | No          | Yes, in PCP |

## Security Comparison

IRISconsole includes security features that use local password protection to assist administrators in securing IRISconsole and its managed systems from unauthorized access. Administrative functions like adding a new user to IRISconsole require an IRISconsole login ID and password. Figure 1-9, page 16 shows the IRIS console security window.

When IRISconsole security is turned on (the default), access to certain operations is controlled. Some of these operations are represented by buttons in the site window or selections on pulldown menus of the IRISconsole GUI, such as adding or deleting sites and systems in the sites (**Edit** pulldown menu).



**Figure 1-9** IRISconsole Security Window

The Console Manager GUI also includes security features that use local password protection to assist administrators in securing Console Manager and its managed systems from unauthorized access (see Figure 1-10, page 17).

**Note:** The SGIconsole GUI does not encrypt its communication with the server. The transfer of passwords is visible to other users of your network. Do not use the SGIconsole GUI to administer computers over the Internet.



**Figure 1-10** Console Manager Security Window

The administrator for Console Manager is root. Only a root user can add or delete other users and view logs. Normal users can perform all other GUI operations.

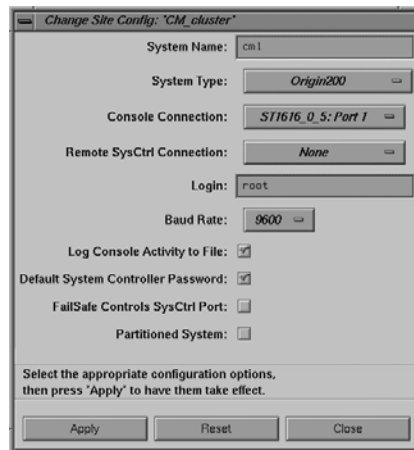
SGIconsole 1.0 assumes your SGIconsole machine and remote display for viewing and running SGI application are behind a secure firewall. SGIconsole 1.0 uses standard Linux security features.

## Configuration Files

This section describes the configuration files used by IRISconsole and SGIconsole and how the respective GUI can be used to update these files.

### IRISconsole Configuration

Figure 1-11, page 18 shows the dialog box used to change an IRISconsole site configuration.



**Figure 1-11** IRISconsole Change Site Config Dialog Box

When you use this dialog box to change the configuration of a site, the IRISconsole data base located in `/var/IRISconsole/2.0/.IC/IRIScon1` directory is updated. Each system in a site has an ASCII file in this site directory that contains the configuration information for the system. The ASCII file for the site being updated in Figure 1-11, page 18 would appear similar to following:

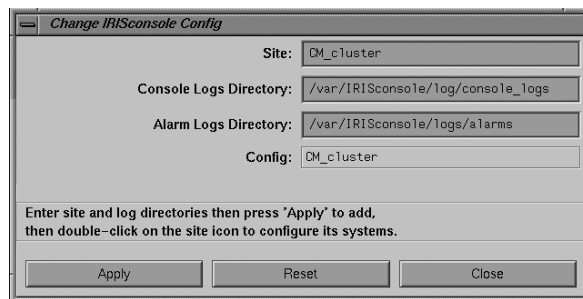
```
cm1 ORIGIN_200 ST1616_0_5_1 None root 9600 yes yes no no
```



The ASCII file entries are mapped to the dialog box in the following list:

| File Entry   | Dialog Box Field or Button Description |
|--------------|--|
| cm1          | System Name                            |
| ORIGIN_200   | System Type                            |
| ST1616_0_5_1 | Console Connection                     |
| None         | Remote SysCtrl Connection              |
| root         | Login                                  |
| 9600         | Baud Rate                              |
| yes          | Log Console Activity to File           |
| yes          | Default System Controller Password     |
| no           | FailSafe Controls SysCtrl Port         |
| no           | Partitioned System                     |

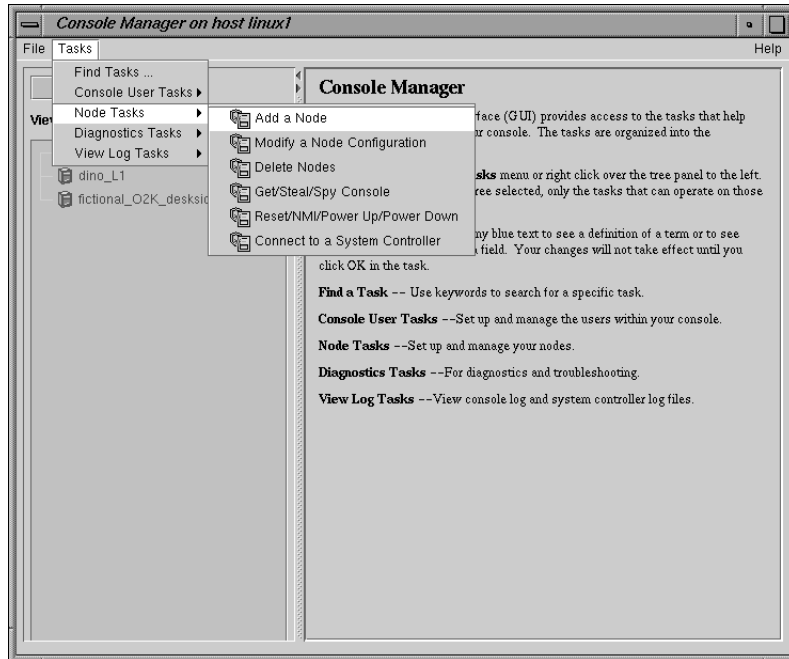
Figure 1-12, page 19 shows the dialog box used to add a new site to IRISconsole. Each site added to an IRISconsole configuration has an entry in the `/var/IRISconsole/2.0/.IC/site` directory



**Figure 1-12** Change IRISconsole Config Dialog Box

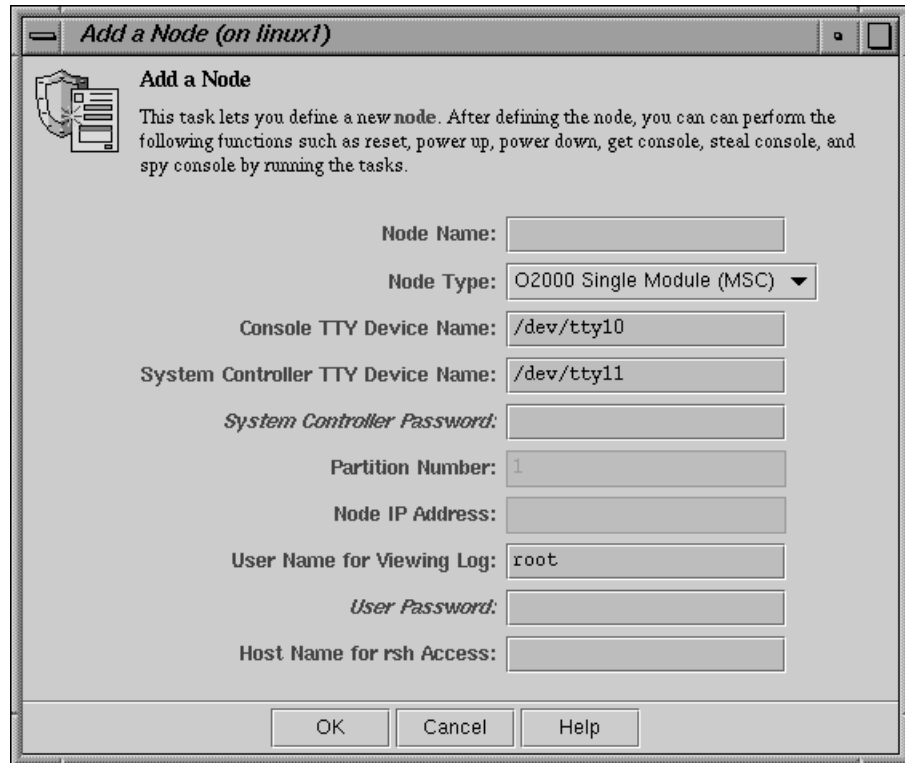
## SGIconsole Configuration

Figure 1-13, page 20 shows the **Node Tasks** menu.



**Figure 1-13** Console Manager **Node Tasks** Menu

When you use this menu to add a node to configuration , the **Add a Node** dialog box appears as shown in Figure 1-14, page 21.



**Figure 1-14** Add a Node Dialog Box

When you use the **Modify a Node Configuration** menu, a similar dialog box appears.

Adding or modify a node using Console Manager creates or modifies the `/var/lib/SGIconsole/nodes` file entry for that node. The Console Manager View menu allows you to see this information for each node as shown in Figure 1-4, page 9.

Adding a user or changing the user's password creates or modifies the `/var/lib/SGIconsole/users` file entry for that user. The Console Manager View menu also allows you to see this information for each user.

The `/var/lib/SGIconsole` configuration files are only updated by Console Manager.

---

**Note:** You should **not** edit the `/var/lib/SGIconsole/nodes` and `/var/lib/SGIconsole/users` files. These configuration files are generated by SGIconsole software. Any changes to these files might be lost during upgrades to future releases of SGIconsole.

---

## Helpful Information on SGIconsole

For a list of documents that contain information about SGIconsole, see the “Related Publications” in the preface of this document.

For information on configuring Console Manager, see the *Console Manager for SGIconsole Administrator’s Guide*.

---

# Index

## C

- Capabilities, 10
- Categories, 10
  - console user tasks
    - add/modify/delete console user, 10
  - daemon control tasks
    - start/stop Nexxus daemon, 10
  - find a task, 10
  - node tasks
    - Add/modify/delete node, 10
  - overview, 10
  - view log tasks
    - View console/system controller logs, 10
- Cluster
  - SGIconsole, 5
- Configuration
  - IRISconsole, 18
  - SGIconsole, 20
- Console Manager
  - advantages, 13
  - security window, 17
  - system administration tasks, 10
  - user account, 17

## F

- Functional comparison
  - SGIconsole versus IRISconsole
    - single-system functions, 14

## H

- Hardware platforms supported, 5

## I

- IRISconsole
  - configuration, 18
    - site, 18
  - database, 18
  - GUI, 5
  - hardware platforms supported, 5
  - main window, 7
  - overview, 1
  - security window, 16
  - site window operations, 7
  - sites, 5
  - system administration tasks, 7
  - systems, 5

## N

- Node
  - SGIconsole, 5

## P

- PCP
  - See "Performance Co-Pilot ", 4
  - Performance Co-Pilot (PCP), 4

## S

- Security
  - comparison, 16
  - Console Manager
    - security window, 17
  - IRISconsole

- security window, 16
- password protection, 16
- SGIconsole
  - configuration, 18
  - hardware platforms supported, 5
  - helpful information, 22
  - L1 and L2 commands , 4
  - Linux security features, 18
  - node, 5
  - overview, 2
  - software package, 2

- Sites
  - IRISconsole, 1, 5
- Systems
  - IRISconsole, 2, 5

## T

- Tasks, 10